



See More. Diagnose Smarter.

**CapsoCam Plus® -
the only 360° capsule
imaging solution**

The CapsoCam Plus System is a state-of-the-art, user-friendly capsule endoscopy solution.

Designed to improve diagnostic confidence, CapsoCam Plus offers a full 360° panoramic lateral view of the small bowel mucosa that provides detailed imaging and clear tissue characterization.

Objective: Diagnostic concordance or kappa value of CapsoCam SV-1 and PillCam™ SB2 in the same consecutive obscure gastrointestinal bleeding (OGIB) patients. Participants swallowed SV-1 and SB2 one hour apart in randomized order.¹

n = 60	CapsoCam	PillCam	P value
Per Lesion Sensitivity (%)	88.5	69.7	P = 0.001
Lesions Detected	108	85	P = 0.001
Per Patient Diagnosis (%)	46.7	48.3	N/S
Findings Per Patients (%)	81.8	84.8	P = 0.791
Mean Reading Time (minutes)*	32	26	P = 0.002

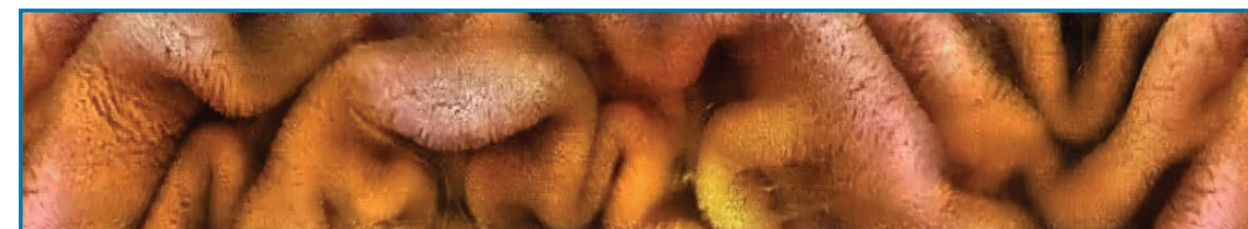
*The authors stated that the reading time of the CapsoCam capsule films did not drop in the second part of the study, which they concluded 'demonstrates the simplicity of the software and the short learning curve of this new system.' CapsoCam also captures more images than PillCam, hence the slight difference in mean reading time.

¹Saurin JC, Pioche M, Vanbervliet G, et al. Prospective randomized comparison between axial-and lateral capsule endoscopy systems in patients with obscure digestive bleeding. *Endoscopy*. 2014; 46(06): 479-484.

Higher Resolution. Greater Clarity.

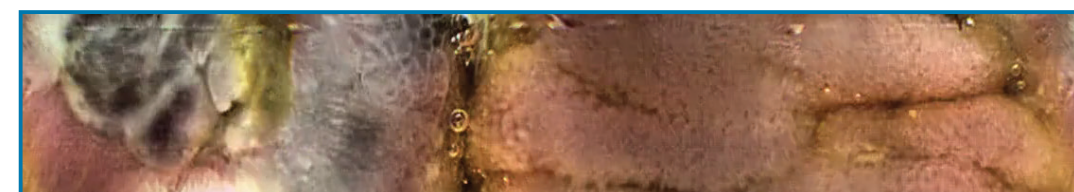
The imaging hardware in CapsoCam Plus has been redesigned and optimized to deliver a more thorough view of the mucosa. With higher resolution and double the memory, CapsoCam Plus provides the most comprehensive imaging available in capsule endoscopy.

Larger vertical field of view displays the full 360° image



CapsoCam Plus image of the small bowel mucosa viewed at 1152 x 212 pixels

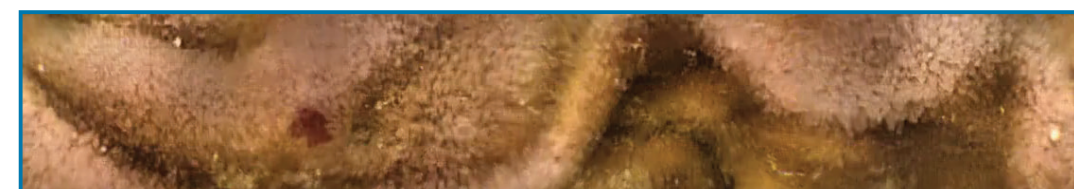
More detailed imaging allows for greater diagnostic confidence



Melanoma



Submucosal Mass



Ectasia



"We've compared it with the front-view capsules, and we have a better result with CapsoCam."

DR. THOMAS PACHOFZKY • KA RUDOLFSTIFTUNG, VIENNA, AUSTRIA



"On the basis of the CapsoCam, which imaged the distal small bowel, we found traces of Crohn's disease, which changed the patient management completely."

DR. SIMON ANDERSON, ST. THOMAS HOSPITAL • LONDON, UK

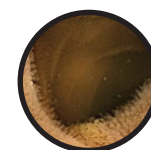
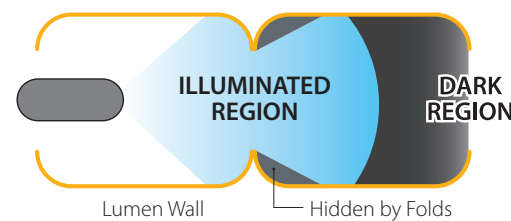
Why Settle for Less?

End-facing capsules have an inherent limitation in imaging the inner curvature of the intestinal wall. In fact, the inability of these capsules to visualize interior landmarks such as the ampulla of Vater is well documented.¹ Studies have shown that faster frame rates and a wider field of view do not overcome this limitation, which could account for missed lesions elsewhere in the small bowel.²

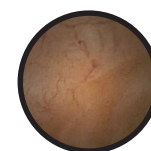
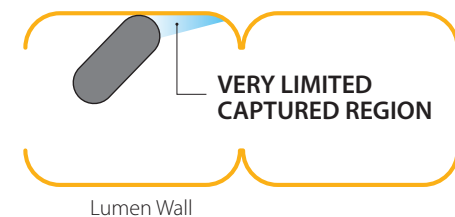
The value of end-facing cameras is further limited by tumbling, incomplete illumination, and the inability to visualize behind mucosal folds.



Disadvantages of End-Facing Cameras



TUNNEL PATTERN
Limiting depth of view causes dark regions where it is hard to see.

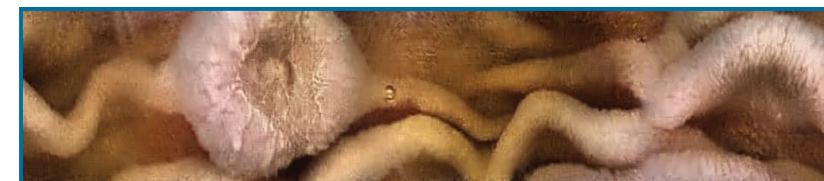


WALL PATTERN
Capsule is pressed against wall resulting in very small region being captured.

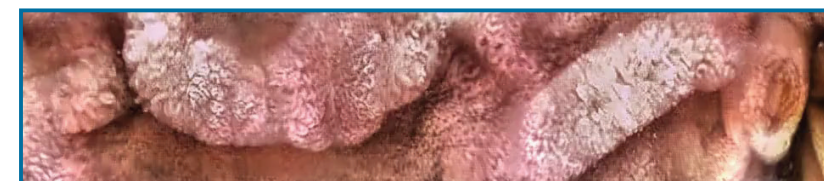
Advantages at Every Turn

By design, CapsoCam Plus overcomes the fundamental imaging limitations of end-facing cameras to provide a more direct, more complete view of the mucosa. Additionally, the lateral view provided by CapsoCam Plus produces a more stable video, which may reduce reader fatigue.

CapsoCam Plus' auto illumination technology uses 16 independently controlled LEDs to illuminate the circumferential area around the capsule. This technology optimizes the lighting while each image is captured, minimizing the effects of tumbling or other peristaltic activity.

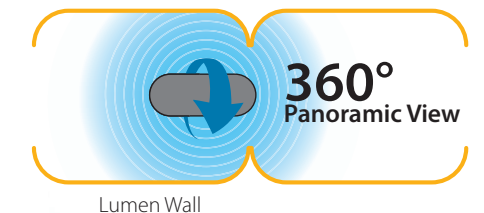


Ampulla of Vater



Crohn's Disease

Four on-board cameras capture high resolution 360° images of the small bowel - providing for a detailed examination of the mucosal surface.



In a recent case study using CapsoCam in a patient with suspected Crohn's disease, ninety-seven (97) erosions and 27 ulcers were observed from the distal duodenum to the terminal ileum. The study authors stated "the 360° panoramic view, together with a large rate of recorded frames (2-33 frames per finding), allowed for a clear characterization of each lesion."³

¹Tunnel and Wall Pattern Images: Malagelada, C. et al. (2015). Classification of functional bowel disorders by objective physiological criteria based on endoluminal image analysis. Am J Physiol Gastrointest Liver Physiol, 309(6). doi:10.1152/ajpgi.00193.2015

²Koulaouzidis, A. et al. (2013). Looking forwards: Not necessarily the best in capsule endoscopy? Ann Gastroenterol, 26(4), 365-367.

³Selby, W. S., & Prakoso, E. (2011). The inability to visualize the ampulla of Vater is an inherent limitation of capsule endoscopy. European Journal of Gastroenterology & Hepatology, 23(1), 101-103. doi:10.1097/meg.0b013e3283410210

⁴Tontini Gian Eugenio et al. New VCE system identifies Crohn's disease. Endoscopy 2014; 46: E353-E354

Save Time. Care Better.

In addition to offering the only 360° view on the market, the CapsoCam Plus capsule endoscopy solution is designed to **minimize procedure room time** by eliminating the hassle and expense of data recorders.



Four Simple Steps to an Accurate Diagnosis

CapsoCam Plus uses a novel, on-board storage system that allows the capsule to operate without transmitting data during the examination, which completely eliminates the need for bulky external equipment.

Since CapsoCam Plus doesn't transmit radio frequency (RF) waves, a CapsoCam Plus examination is **safe for use with implantable devices** such as pacemakers, defibrillators, and insulin pumps.



1 Patient swallows the vitamin-sized CapsoCam Plus.



2 Patient retrieves the CapsoCam Plus with the CapsoRetrieve® tool.



3 Patient data is easily downloaded with the CapsoAccess® system.



4 Physician quickly plays back and reviews patient data with the CapsoView® application.

See the Full Picture.



CapsoView's innovative, user-friendly interface takes the high resolution 360° *in vivo* images captured by CapsoCam Plus and presents them in an easy-to-read orientation, making the image review process simple, fast and efficient.

- User-friendly interface
- Clean, crisp images
- Easy downloads
- Efficient report generation



CapsoView® User-Friendly Features

- | | | | |
|----------------------------|----------------------------------|------------------------------|-------------------------------|
| Expanded Viewing Modes | One-click Red Detection | Precision Speed Controls | Enhanced Reference Library |
| Intuitive Playback Options | Quick Image Capture | Flexible Contrast Adjustment | Easy Annotation |
| Electronic Signature | Advanced Color Enhancement (ACE) | Targeted Magnification | Customizable Report Templates |



"One of the biggest advantages for CapsoCam Plus is the streamlined workflow. I can use the capsules on any day and not worry whether my recorders are in use. And it's easy for my medical assistants to set up a CapsoCam Plus patient."

DR. IAN STORCH, GI ASSOCIATES OF LONG ISLAND • NEW HYDE PARK, NY, USA

No Data Recorder Required.

Competitor Procedure Flow



Ordinary capsule endoscopy systems require patients to wear expensive equipment necessary for data acquisition. The need for this equipment creates a cumbersome process that ties up exam rooms, limits flexibility in scheduling, and often requires staff to be available for extended hours in order to collect equipment.

Because there is no need to attach equipment to the patient, administration of a CapsoCam Plus capsule is a simplified procedure that allows for more flexibility in scheduling and takes less time.

Patients are unburdened from the need to wear uncomfortable equipment or make multiple trips to the facility in order to complete the exam. In fact, a recent study indicated that **80% of patients prefer CapsoCam¹** over a system with a conventional data recorder.

CapsoCam Plus is cleared for patients 2 years and above. With no belts or wires, CapsoCam Plus offers comfort for the pediatric patient and convenience for their caregivers.

¹Patient preference survey administered to more than 100 patients during multi-center North American trial in support of FDA 510(k).



Specifications

Length (mm)	31
Diameter (mm)	11
Weight (g)	4
Battery Life (h)	15 (typical)
Field of View (Deg)	360°
Depth of View (mm)	0-18
Cameras (nos.)	4
LEDs (nos.)	16
Frame Rate (max. fps)	5/camera
Resolution (pixels)	221,884

The CapsoCam Plus video capsule system is intended for visualization of the small bowel mucosa in patients ages 2 and above. It may be used as a tool in the detection of abnormalities of the small bowel.

To learn more or to set up a demonstration, contact your local CapsoCam representative.



CapsoVision
empowering through innovation

capsovision.com



Experience the **360°** Difference

360°